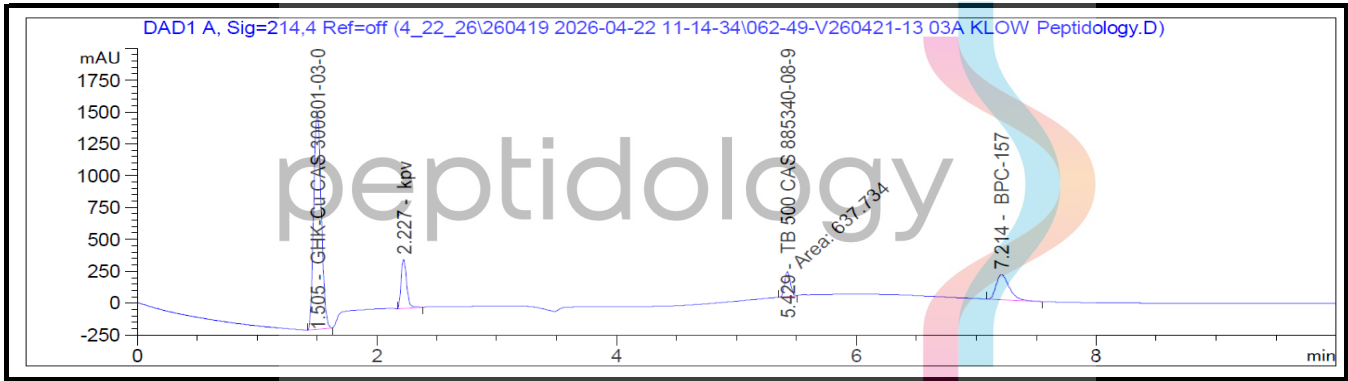


Certificate of Analysis

KLOW 50 mg/10 mg/10 mg/10 mg

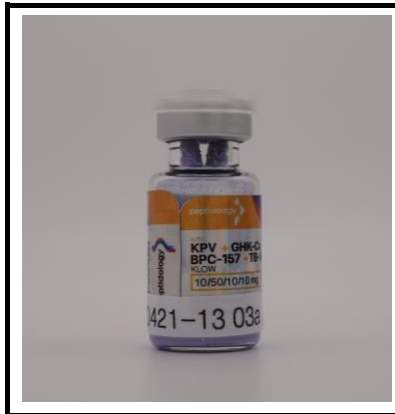
Report To:
Peptidology
11111 N Scottsdale Rd STE 205
Scottsdale, AZ 85254
480-974-4660

Compound: KLOW
Amount: 50 mg/10 mg/10 mg/10 mg
Laboratory ID: V260421-13 003
Date Reported: 5/6/2026
Lot Number: 1673



Chromatogram for vial A shown above.

Analysis	Method	Result (per Vial)		
Chromatographic Purity	HPLC-UV/VIS	>99.50%	>99.50%	>99.50%
Assay: GHK-Cu	HPLC-UV/VIS	52.64 mg	54.11 mg	53.22 mg
Assay: BPC-157	HPLC-UV/VIS	10.40 mg	10.74 mg	10.48 mg
Assay: TB-500	HPLC-UV/VIS	10.60 mg	10.94 mg	10.72 mg
Assay: KPV	HPLC-UV/VIS	10.71 mg	10.95 mg	10.76 mg




Report By: Dustin Newman, Laboratory Director on 5/6/2026



Approved By: Tori Johnson, Operations Manager on 5/6/2026



Please consult A2LA Certificate #6377.01.01 for a list of accredited tests. Samples were received in acceptable condition. The result(s) in this report relate only to the portion of the sample(s) tested. All analyses were performed consistent with the Vanguard Laboratory Quality Management System. Vanguard Laboratory and its staff did not observe or participate in the sample selection process, and cannot confirm the authenticity of the sample or its representativeness of the associated lot/batch.



Vanguard Laboratory
2635 Parkmont Ln
Olympia, Wa 98502
360-967-7010

Certificate of Analysis

KLOW 50 mg/10 mg/10 mg/10 mg

Report To:
Peptidology
11111 N Scottsdale Rd STE 205
Scottsdale, AZ 85254
480-974-4660

Compound: KLOW
Amount: 50 mg/10 mg/10 mg/10 mg
Laboratory ID: V260421-13 003
Date Reported: 5/6/2026
Lot Number: 1673

Analyte	Method	LOQ (ppm)	Result (per vial)	
Chromium (Cr)	ICP-MS	0.05	ND	ND
Arsenic (As)	ICP-MS	0.01	ND	ND
Cadmium (Cd)	ICP-MS	0.01	ND	ND
Lead (Pb)	ICP-MS	0.02	ND	ND
Mercury (Hg)	ICP-MS	0.005	ND	ND

Run ID: 260422.3

Analysis	Method	Result (per Vial)	
Endotoxins	LAL	A	Pass - <5.00 EU/mg*
		B	Pass - <5.00 EU/mg*
		C	Pass - <5.00 EU/mg*

*Pass/Fail criteria based on the USP/FDA threshold of 5 EU/kg (350 EU total for a 70 kg adult)

Analysis	Method	Result (per Vial)	
Sterility	USP <71>	A	Pass - No Growth
		B	Pass - No Growth
		C	Pass - No Growth
		D	Pass - No Growth
		E	Pass - No Growth

Report By: Dustin Newman, Laboratory Director on 5/6/2026

Approved By: Tori Johnson, Operations Manager on 5/6/2026

ND: Non-Detect

LOD: Limit of Quantification



Please consult A2LA Certificate #6377.01.01 for a list of accredited tests. Samples were received in acceptable condition. The result(s) in this report relate only to the portion of the sample(s) tested. All analyses were performed consistent with the Vanguard Laboratory Quality Management System. Vanguard Laboratory and its staff did not observe or participate in the sample selection process, and cannot confirm the authenticity of the sample or its representativeness of the associated lot/batch.



Vanguard Laboratory
 2635 Parkmont Ln
 Olympia, Wa 98502
 360-967-7010

Certificate of Analysis

KLOW 50 mg/10 mg/10 mg/10 mg

Report To:
Peptidology
 11111 N Scottsdale Rd STE 205
 Scottsdale, AZ 85254
 480-974-4660


Compound: KLOW
 Amount: 50 mg/10 mg/10 mg/10 mg
 Laboratory ID: V260421-13 003
 Date Reported: 5/6/2026
 Lot Number: 1673


Residual Solvents Analysis			
Analyte	Method	LOQ (ppm)	Result (ppm)
Acetone	GC-MS	3.7	ND
Benzene	GC-MS	0.02	ND
Butanes	GC-MS	3.7	ND
Chloroform	GC-MS	0.02	ND
Cyclohexane	GC-MS	2.9	ND
Dichloromethane	GC-MS	0.45	ND
Ethanol	GC-MS	3.7	ND
Ethyl Acetate	GC-MS	3.7	ND
Heptane	GC-MS	3.7	ND
Hexanes	GC-MS	0.21	ND
Isopropanol	GC-MS	3.7	ND
Methanol	GC-MS	2.2	ND
Pentanes	GC-MS	3.7	ND
Propane	GC-MS	3.7	ND
Toluene	GC-MS	0.66	ND
Total Xylenes	GC-MS	1.6	ND

Analysis	Method	Result (per Vial)	
Container Closure Integrity	Dye Ingress Method	A	Pass
		B	Pass
		C	Pass
Solubility Analysis	Fully Soluble in 2 mL Water	A	Pass
		B	Pass
		C	Pass
Trifluoroacetic Acid (TFA)	Ion Chromotography	ND - <0.10%	

ND: Non-Detect
 LOD: Limit of Quantification



Report By:  Dustin Newman, Laboratory Director on 5/6/2026

Approved By:  Tori Johnson, Operations Manager on 5/6/2026

Please consult A2LA Certificate #6377.01.01 for a list of accredited tests. Samples were received in acceptable condition. The result(s) in this report relate only to the portion of the sample(s) tested. All analyses were performed consistent with the Vanguard Laboratory Quality Management System. Vanguard Laboratory and its staff did not observe or participate in the sample selection process, and cannot confirm the authenticity of the sample or its representativeness of the associated lot/batch.



LABORATORY REPORT

Peptidology
11111 N Scottsdale Rd
Scottsdale, AZ 85254

Phone: 480-974-4660

Account #: E74035

Sample Name: KLOW

Lot #: 1673

Storage Conditions: Room Temperature

Date Received: 4/21/2026

Submission #: ETX-260420-0780



Microbiology Tests:

ScanRDI Sterility Test

Method Suitability: No Method Suitability on file

Result: Pass

Date Started: 4/21/2026

Date Completed: 4/23/2026

Respectfully submitted,
EAGLE ANALYTICAL SERVICES INC.

Alison Eng, Quality Control Manager

Results apply only to the tested sample(s) as received.