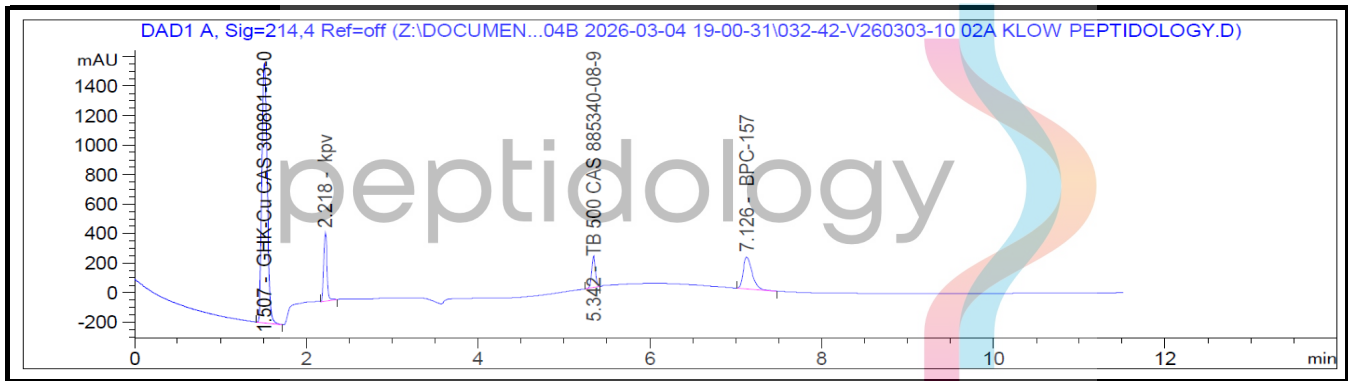


Certificate of Analysis

KLOW 80 mg

Report To:
Peptidology
11111 N Scottsdale Rd STE 205
Scottsdale, AZ 85254
480-974-4660

Compound: KLOW
Amount: 80 mg
Laboratory ID: V260303-10 002
Date Reported: 3/23/2026
Lot Number: 1671



Analysis	Method	Result (per Vial)		
Chromatographic Purity	HPLC-UV/VIS	>99.80%	>99.80%	>99.80%
Assay: GHK-Cu	HPLC-UV/VIS	58.19 mg	59.63 mg	59.31 mg
Assay: BPC-157	HPLC-UV/VIS	10.36 mg	10.72 mg	10.57 mg
Assay: TB-500	HPLC-UV/VIS	12.67 mg	13.05 mg	12.93 mg
Assay: KPV	HPLC-UV/VIS	11.33 mg	11.88 mg	11.72 mg




Report By: Dustin Newman, Laboratory Director on 3/23/2026



Approved By: Tori Johnson, Operations Manager on 3/23/2026



Please consult A2LA Certificate #6377.01.01 for a list of accredited tests. Samples were received in acceptable condition. The result(s) in this report relate only to the portion of the sample(s) tested. All analyses were performed consistent with the Vanguard Laboratory Quality Management System. Vanguard Laboratory and its staff did not observe or participate in the sample selection process, and cannot confirm the authenticity of the sample or its representativeness of the associated lot/batch.



Vanguard Laboratory
2635 Parkmont Ln
Olympia, Wa 98502
360-967-7010

Certificate of Analysis

KLOW 80 mg

Report To:
Peptidology
11111 N Scottsdale Rd STE 205
Scottsdale, AZ 85254
480-974-4660

Compound: KLOW
Amount: 80 mg
Laboratory ID: V260303-10 002
Date Reported: 3/23/2026
Lot Number: 1671

Analyte	Method	LOQ (ppm)	Result (ppm)
Chromium (Cr)	ICP-MS	0.10	ND
Arsenic (As)	ICP-MS	0.01	0.02
Cadmium (Cd)	ICP-MS	0.01	ND
Lead (Pb)	ICP-MS	0.02	ND
Mercury (Hg)	ICP-MS	0.005	ND

Run ID: 260308

Analysis	Method	Result (per Vial)
Endotoxins	LAL	Pass - <5.00 EU/mg*
Sterility	USP <71>	Pass - No Growth Detected

*Pass/Fail criteria based on the USP/FDA threshold of 5 EU/kg (350 EU total for a 70 kg adult)

Report By: Dustin Newman, Laboratory Director on 3/23/2026

Approved By: Tori Johnson, Operations Manager on 3/23/2026

ND: Non-Detect

LOD: Limit of Quantification



Please consult A2LA Certificate #6377.01.01 for a list of accredited tests. Samples were received in acceptable condition. The result(s) in this report relate only to the portion of the sample(s) tested. All analyses were performed consistent with the Vanguard Laboratory Quality Management System. Vanguard Laboratory and its staff did not observe or participate in the sample selection process, and cannot confirm the authenticity of the sample or its representativeness of the associated lot/batch.



LABORATORY REPORT

Peptidology
11111 N Scottsdale Rd
Scottsdale, AZ 85254
Phone: 480-974-4660

Account #: E74035
Sample Name: KLOW
Lot #: 1671
Storage Conditions: Room Temperature

Date Received: 3/3/2026

Submission #: ETX-260302-0483



Microbiology Tests:

ScanRDI Sterility Test

Date Started: 3/3/2026

Date Completed: 3/5/2026

Method Suitability: No Method Suitability on file

Result: Pass

Respectfully submitted,
EAGLE ANALYTICAL SERVICES INC.

Alison Eng, Quality Control Manager

Results apply only to the tested sample(s) as received.