



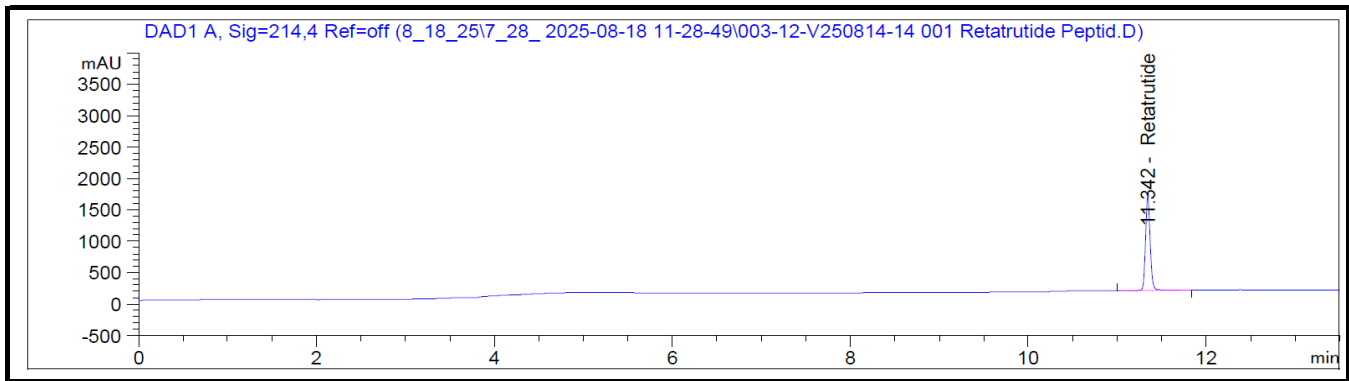
Vanguard Laboratory
 2635 Parkmont Ln
 Olympia, Wa 98502
 360-967-7010

Certificate of Analysis

Retatrutide 10 mg

Report To:
Peptidology
 1111 N Scottsdale Rd STE 205
 Scottsdale, AZ 85254
 480-974-4660

Compound: Retatrutide
 Amount: 10 mg
 Laboratory ID: V250814-14 001
 Date Reported: 9/3/2025
 Lot Number: 1362



Analysis	Method	Result
Chromatographic Purity	HPLC-UV/VIS	>99.80% + 0.18%
Assay	HPLC-UV/VIS	11.02



Report By: Dustin Newman, Laboratory Director on 9/3/2025

Approved By: Tori Johnson, Operations Manager on 9/3/2025

Please consult A2LA Certificate #6377.01.01 for a list of accredited tests. Samples were received in acceptable condition. The result(s) in this report relate only to the portion of the sample(s) tested. All analyses were performed consistent with the Vanguard Laboratory Quality Management System. Vanguard Laboratory and its staff did not observe or participate in the sample selection process, and cannot confirm the authenticity of the sample or its representativeness of the associated lot/batch.



Vanguard Laboratory
2635 Parkmont Ln
Olympia, Wa 98502
360-967-7010

Certificate of Analysis

Retatrutide 10 mg

Report To:
Peptidology
1111 N Scottsdale Rd STE 205
Scottsdale, AZ 85254
480-974-4660

Compound: Retatrutide
Amount: 10 mg
Laboratory ID: V250814-14 001
Date Reported: 9/3/2025
Lot Number: 1362

Analyte	Method	LOQ (ppm)	Result (ppm)
Chromium (Cr)	ICP-MS	0.025	ND
Arsenic (As)	ICP-MS	0.01	ND
Cadmium (Cd)	ICP-MS	0.01	ND
Lead (Pb)	ICP-MS	0.01	ND
Aluminum (Al)	ICP-MS	2.00	ND
Mercury (Hg)	ICP-MS	0.005	ND

Run ID: 250808, 250828Hg

Analysis	Method	Result
Endotoxins	LAL	0.17 EU/mg
Sterility	USP <71>	PASS - No microorganisms present in sample tested.

Report By: Dustin Newman, Laboratory Director on 9/3/2025

Approved By: Tori Johnson, Operations Manager on 9/3/2025

ND: Non-Detect

LOD: Limit of Quantification



Please consult A2LA Certificate #6377.01.01 for a list of accredited tests. Samples were received in acceptable condition. The result(s) in this report relate only to the portion of the sample(s) tested. All analyses were performed consistent with the Vanguard Laboratory Quality Management System. Vanguard Laboratory and its staff did not observe or participate in the sample selection process, and cannot confirm the authenticity of the sample or its representativeness of the associated lot/batch.