

Certificate of Analysis

KLOW 80 mg

Report To:

Peptidology

1111 N Scottsdale Rd STE 205

Scottsdale, AZ 85254

480-974-4660

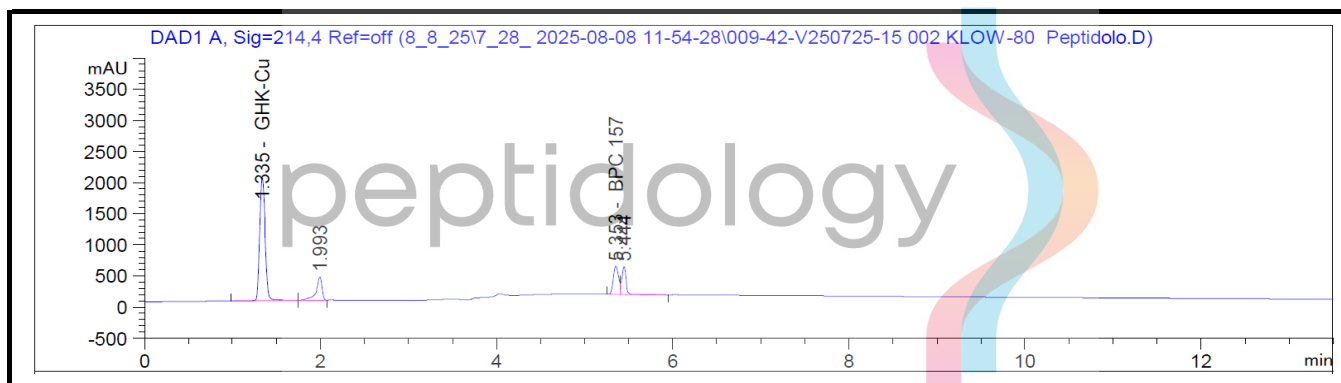
Compound: KLOW

Amount: 80 mg

Laboratory ID: V250725-15 002

Date Reported: 8/11/2025

Lot Number: 1360



Analysis	Method	Result
Chromatographic Purity	HPLC-UV/VIS	>99.00% + 0.18%
Assay: GHK-Cu	HPLC-UV/VIS	55.65 mg
Assay: BPC-157	HPLC-UV/VIS	10.78 mg
Assay: TB-500	HPLC-UV/VIS	10.23 mg
Assay: KPV	HPLC-UV/VIS	10.05 mg




Report By: Dustin Newman, Laboratory Director on 8/11/2025



Approved By: Tori Johnson, Operations Manager on 8/11/2025

Please consult A2LA Certificate #6377.01.01 for a list of accredited tests. Samples were received in acceptable condition. The result(s) in this report relate only to the portion of the sample(s) tested. All analyses were performed consistent with the Vanguard Laboratory Quality Management System. Vanguard Laboratory and its staff did not observe or participate in the sample selection process, and cannot confirm the authenticity of the sample or its representativeness of the associated lot/batch.

Certificate of Analysis

KLOW 80 mg

Report To:

Peptidology

1111 N Scottsdale Rd STE 205

Scottsdale, AZ 85254

480-974-4660

Compound: KLOW

Amount: 80 mg

Laboratory ID: V250725-15 002

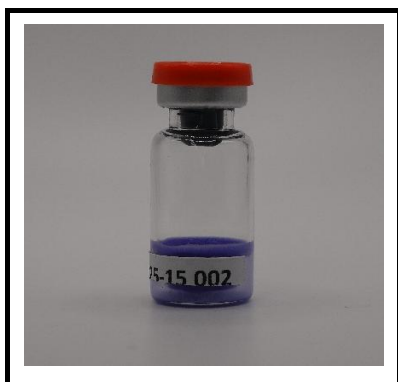
Date Reported: 8/11/2025

Lot Number: 1360

Analyte	Method	LOQ (ppm)	Result (ppm)
Chromium (Cr)	ICP-MS	0.025	ND
Arsenic (As)	ICP-MS	0.01	ND
Cadmium (Cd)	ICP-MS	0.01	ND
Lead (Pb)	ICP-MS	0.01	ND
Aluminum (Al)	ICP-MS	2.00	ND
Mercury (Hg)	ICP-MS	0.005	ND

Run ID: 250804, 250808Hg

Analysis	Method	Result
Endotoxins	LAL	<0.05 EU/mL
Sterility	USP <71>	PASS - No microorganisms present in sample tested.




Report By: Dustin Newman, Laboratory Director on 8/11/2025



Approved By: Tori Johnson, Operations Manager on 8/11/2025

ND: Non-Detect

LOD: Limit of Quantification



Please consult A2LA Certificate #6377.01.01 for a list of accredited tests. Samples were received in acceptable condition. The result(s) in this report relate only to the portion of the sample(s) tested. All analyses were performed consistent with the Vanguard Laboratory Quality Management System. Vanguard Laboratory and its staff did not observe or participate in the sample selection process, and cannot confirm the authenticity of the sample or its representativeness of the associated lot/batch.