



Vanguard Laboratory
2635 Parkmont Ln
Olympia, Wa 98502
360-967-7010

Certificate of Analysis

HGH Fragment 176-191 5 mg

Report To:

Peptidology

1111 N Scottsdale Rd STE 205
Scottsdale, AZ 85254
480-974-4660

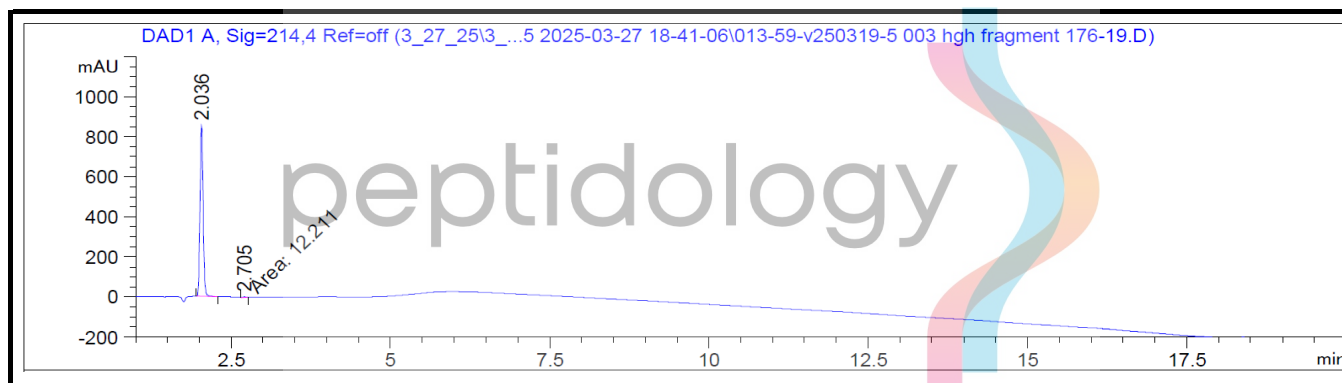
Compound: HGH Fragment 176-191

Amount: 5 mg

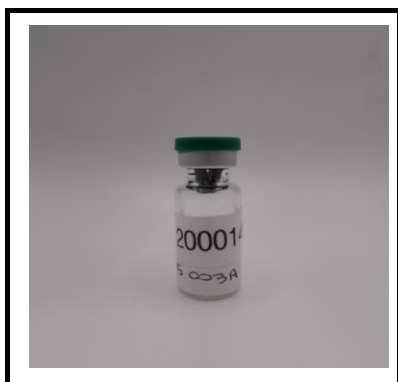
Laboratory ID: V250319-5 003

Date Reported: 4/8/2025

Lot Number: 1200014



Analysis	Method	Result
Chromatographic Purity	HPLC-UV/VIS	99.37% + 0.18%
Assay	HPLC-UV/VIS	5.16 mg



Report By: Dustin Newman, Laboratory Director on 4/8/2025

Approved By: Tori Johnson, Operations Manager on 4/8/2025



Please consult A2LA Certificate #6377.01.01 for a list of accredited tests. Samples were received in acceptable condition. The result(s) in this report relate only to the portion of the sample(s) tested. All analyses were performed consistent with the Vanguard Laboratory Quality Management System. Vanguard Laboratory and its staff did not observe or participate in the sample selection process, and cannot confirm the authenticity of the sample or its representativeness of the associated lot/batch.



Vanguard Laboratory
2635 Parkmont Ln
Olympia, Wa 98502
360-967-7010

Certificate of Analysis

HGH Fragment 176-191 5 mg

Report To:

Peptidology

1111 N Scottsdale Rd STE 205
Scottsdale, AZ 85254
480-974-4660

Compound: HGH Fragment 176-191

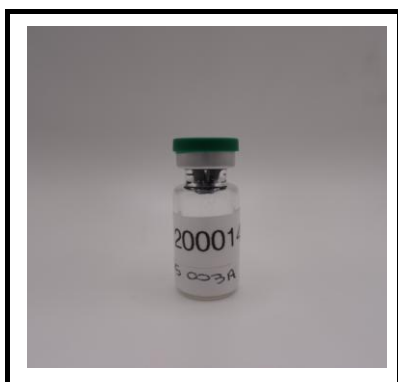
Amount: 5 mg

Laboratory ID: V250319-5 003

Date Reported: 4/8/2025

Lot Number: 1200014

Analysis	Method	Result
Endotoxins	LAL	<0.05 EU/mL
Sterility	USP <71>	PASS - No microorganisms present in sample tested.



Report By: Dustin Newman, Laboratory Director on 4/8/2025

Approved By: Tori Johnson, Operations Manager on 4/8/2025

ND: Non-Detect

LOD: Limit of Quantification



Please consult A2LA Certificate #6377.01.01 for a list of accredited tests. Samples were received in acceptable condition. The result(s) in this report relate only to the portion of the sample(s) tested. All analyses were performed consistent with the Vanguard Laboratory Quality Management System. Vanguard Laboratory and its staff did not observe or participate in the sample selection process, and cannot confirm the authenticity of the sample or its representativeness of the associated lot/batch.